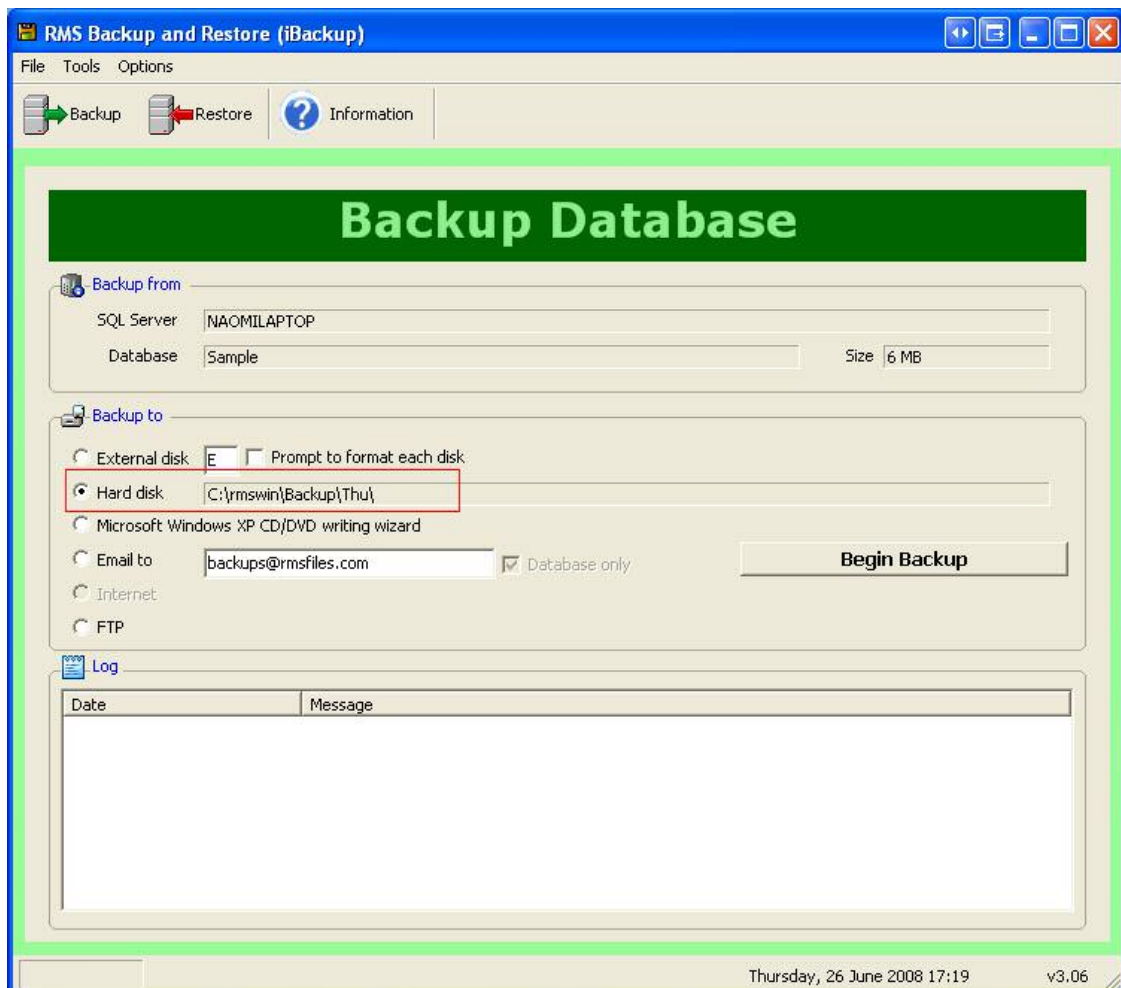


RMS BACKUP Hard Disk

Open your RMS Backup and Restore screen.

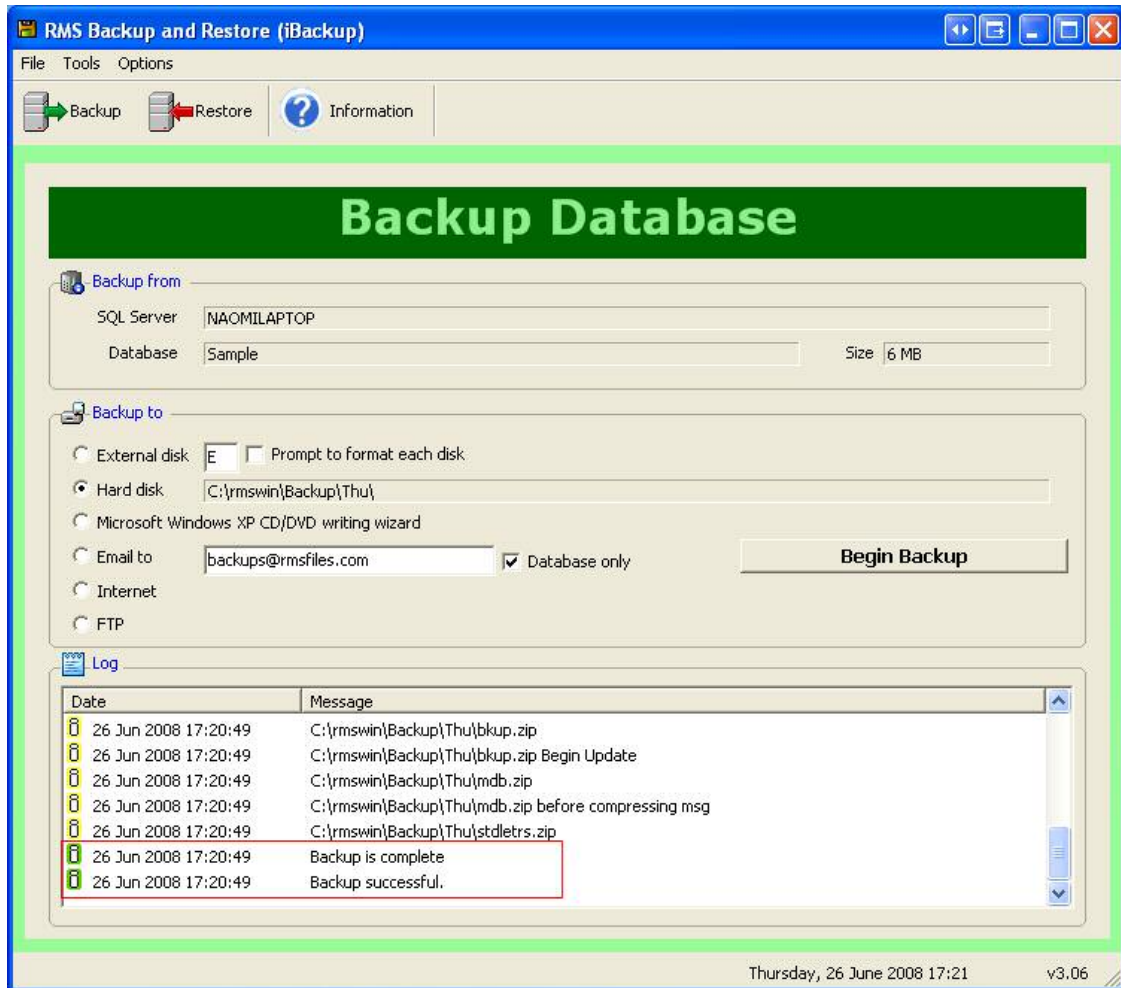
Go to Start > All Programs > RMS for Windows > Backup and Restore.

Once open select the Backup option on the top left hand side of the screen, you will be presented with the following screen.



Select the 'Backup to' option of Hard disk.

Choose 'Begin Backup'.



RMS by default will always backup to the shared data path first, it will then copy this backup across to the external drive.

Once the process is complete the following screen will appear – choose OK, you may then close the Backup and Restore screen.

